

DELIVERING EFFECTIVE SOLUTIONS FOR ESSENTIAL SERVICES



LeChase is committed to providing solutions that help keep essential businesses and services open within our communities.

A community hospital requested assistance on a temporary expansion to accommodate more patients. Work involved retrofitting existing swing space to create 28 additional patient rooms in less than a week's time. This included coordination with local utilities to set up temporary electricity for the rooms and installing a roof fan to handle the added capacity. In addition, crews prepped the hospital's courtyard to enable the Army Corps of Engineers to erect a tent to treat non-critical patients – freeing up existing beds within the hospital and keeping those patients isolated from incoming COVID-related cases.

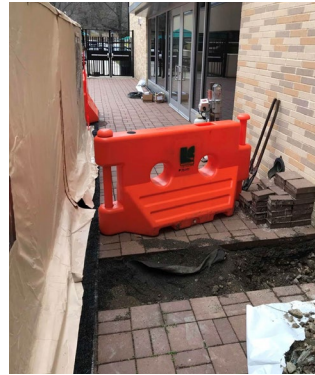
CASE STUDY



Temporary electricity



Courtyard prep



Courtyard prep



Non-critical patient tent